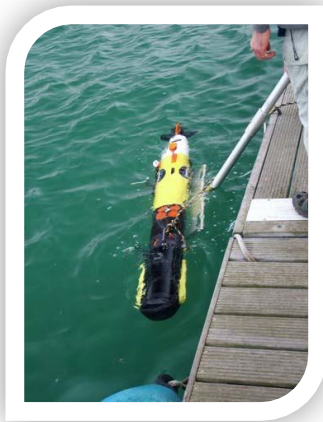


Reference	SN-0801
Classification	Unclassified
Version	1.00
Date	March 2008

Survey note: Empress Dock, Southampton, UK



The information contained herein is the property of Bathyswath (sales@bathyswath.com) and is supplied without liability for errors or omissions. No part may be reproduced except if a written permission is given by the company. The copyright and the foregoing restriction on reproduction extend to all media in which this information may be embodied.

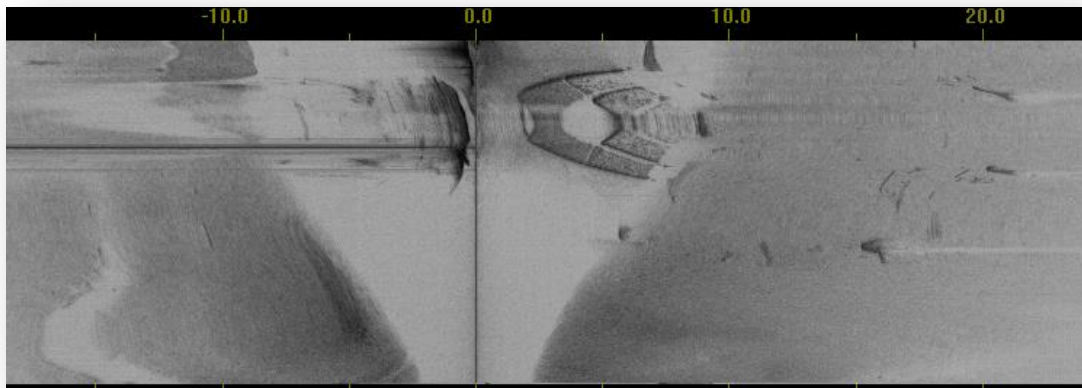


1 SYSTEM USED

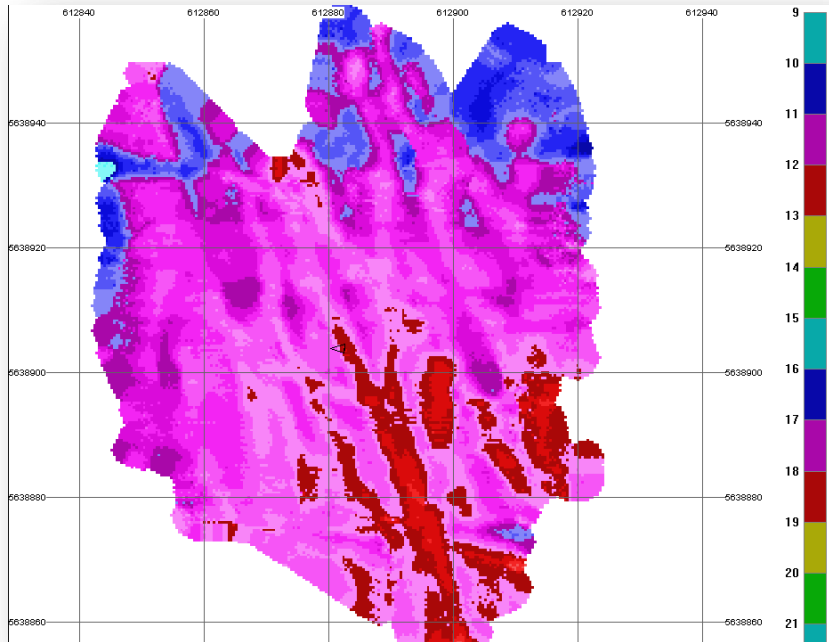
Sonar: Bathyswath-1-AUV (SWATHplus) - 468 kHz
Motion sensing and positioning: Kearfott T16

2 SURVEY DESCRIPTION

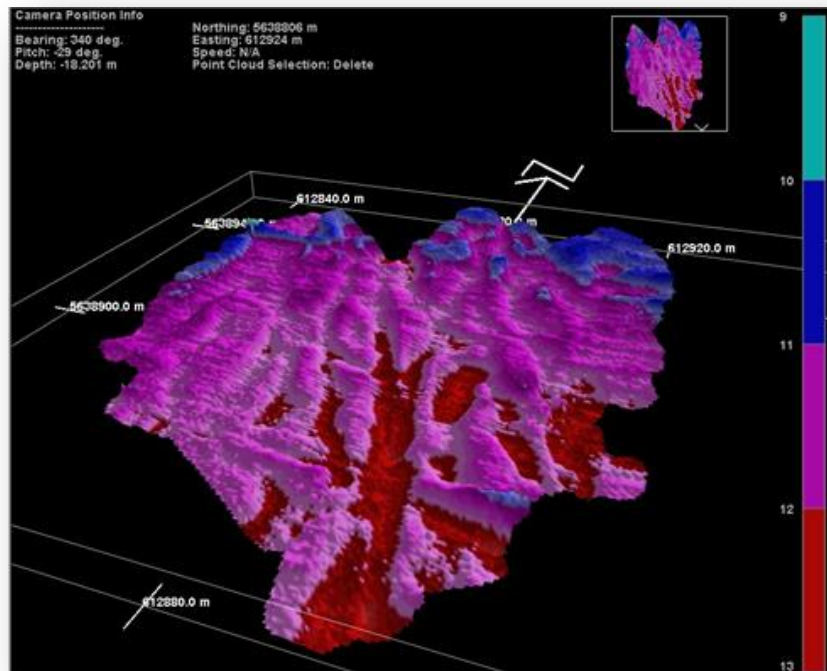
This was a sea trial with REMUS 100 autonomous underwater vehicle (AUV). Dredge scours on the floor of Empress Dock mapped and imaged. Area approximately 100m by 100m surveyed in less than 5 minutes run-time; about 2 hours on site. Data processing and imaging was performed with Bathyswath software suite.



Sidescan view of ship hull



2D bathymetry of Empress Dock



3D bathymetry of Empress Dock