



www.bathyswath.com
support@bathyswath.com

Reference	SN-0701
Classification	Unclassified
Version	1.00
Date	November 2007

Survey note: Louisiana, USA



The information contained herein is the property of Bathyswath (sales@bathyswath.com) and is supplied without liability for errors or omissions. No part may be reproduced except if a written permission is given by the company. The copyright and the foregoing restriction on reproduction extend to all media in which this information may be embodied.

The information contained on this sheet is subject to restrictions listed on the cover page of the document

1 SYSTEM USED

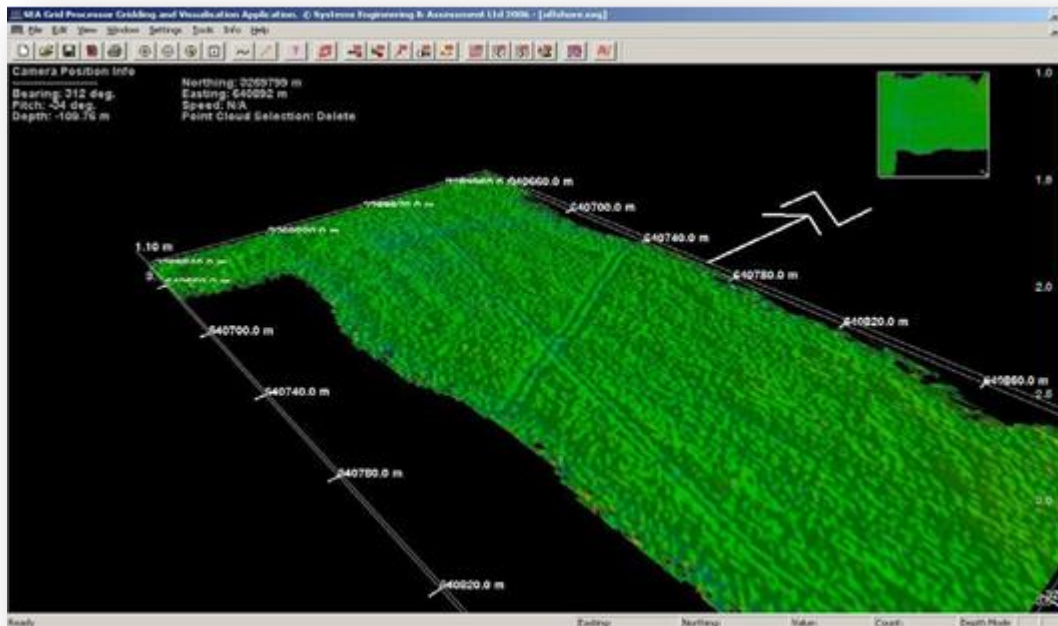
Sonar: Bathyswath-1 (SWATHplus) - 468 kHz
 Motion sensing and positioning: CodaOctopus F190, Omnistar enabled

2 SURVEY DESCRIPTION

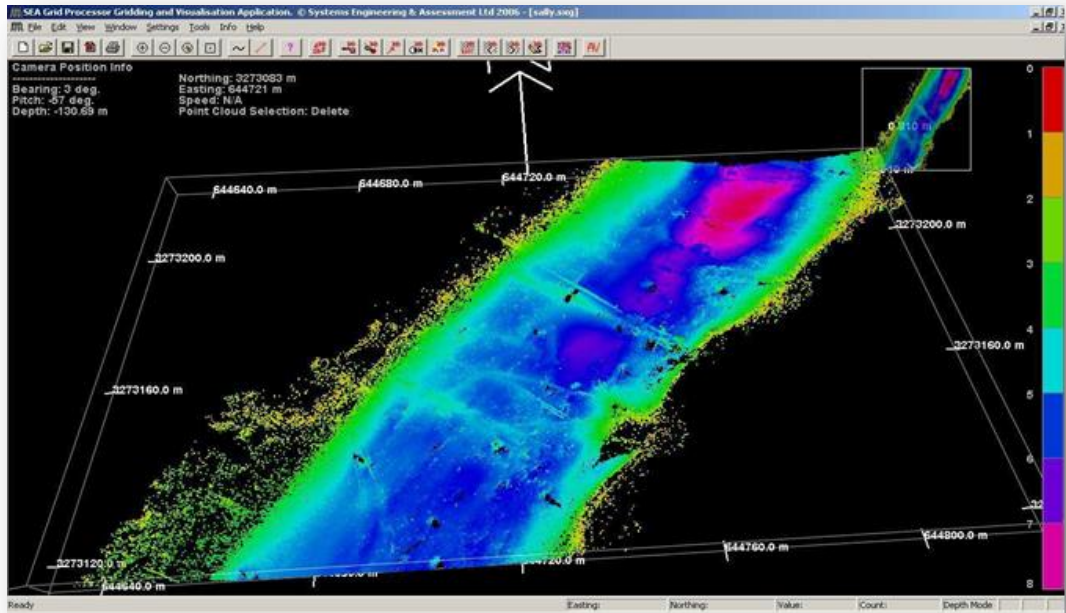
The test areas were located in Sally Bayou and offshore in Atchafalaya Bay, approximately 29.5N, 91.25W. Surveys were undertaken over 2 days.

- First day survey 5km long, 80m wide Bayou survey.
- Second day Bayou survey 2.5km long, 90m wide.

The survey goal was to inspect pipeline crossings. Area shows anchor drag scarring. All survey areas in 3m to 4m water depth. Height control using observed tides from a local NOAA tide station.



3d bathy view of anchor drags



3D bathy view of pipeline crossing in Sally Bayou