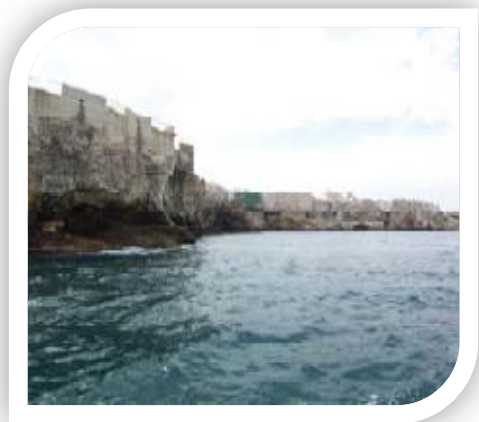


Reference	SN-0604
Classification	Unclassified
Version	1.00
Date	October 2006

Survey note: Mola di Bari, Italy



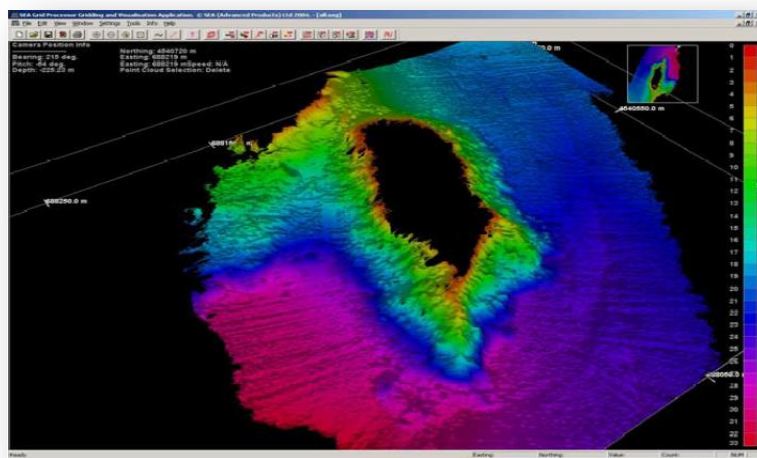
The information contained herein is the property of Bathyswath (sales@bathyswath.com) and is supplied without liability for errors or omissions. No part may be reproduced except if a written permission is given by the company. The copyright and the foregoing restriction on reproduction extend to all media in which this information may be embodied.

1 SYSTEM USED

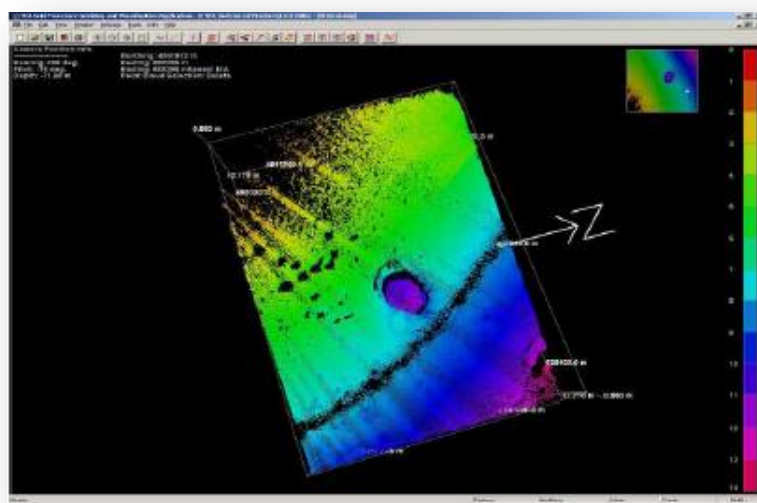
Sonar: Bathyswath-1 (SWATHplus) - 468 kHz
 Motion sensing and positioning: CodaOctopus F180

2 SURVEY DESCRIPTION

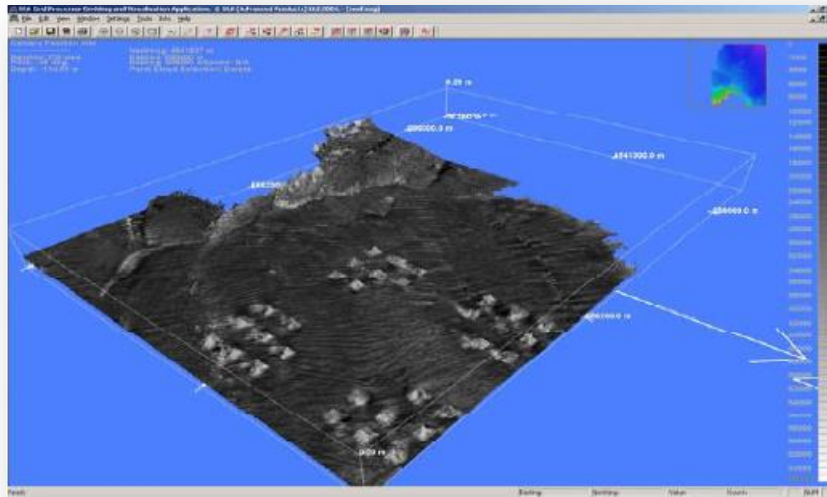
SWATHplus trial survey for STES. This survey was conducted in one day along the coast to monitor the cliffs and caves at Polignano a Mare. The water depth was varying from 0 to 30m. One day mobilization (preparation) in Mola di Bari.



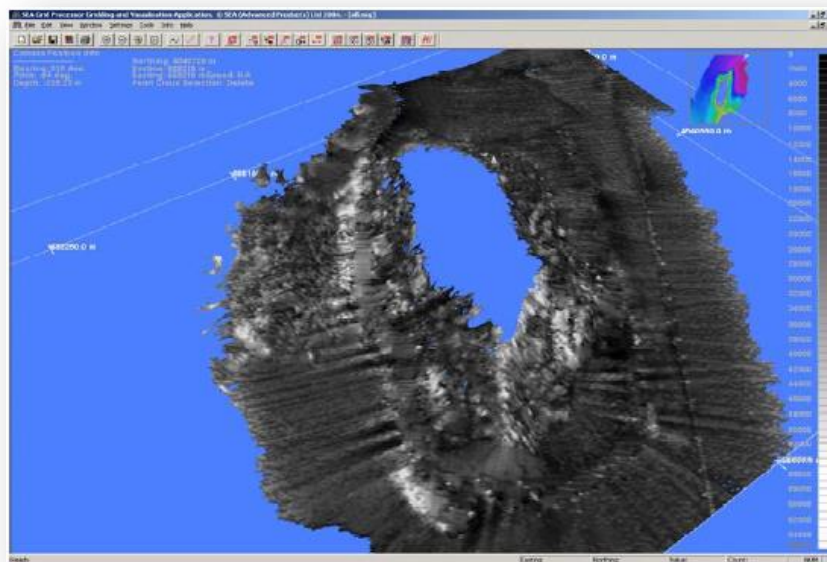
3d colour bathymetry view of an island



A 'blue hole' collapsed cave



3d sidescan view of the pyramid artificial reef structures



3d Sidescan view of an island showing a pipeline