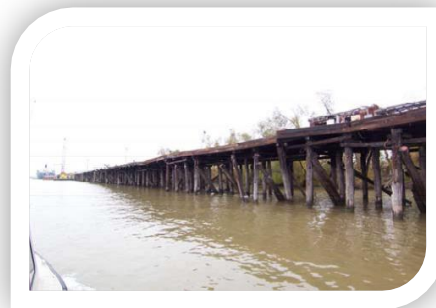




www.bathyswath.com
support@bathyswath.com

Reference SN-0602
Classification Unclassified
Version 1.00
Date December 2006

Survey note: New Orleans, Louisiana, USA



The information contained herein is the property of Bathyswath (sales@bathyswath.com) and is supplied without liability for errors or omissions. No part may be reproduced except if a written permission is given by the company. The copyright and the foregoing restriction on reproduction extend to all media in which this information may be embodied.

The information contained on this sheet is subject to restrictions listed on the cover page of the document

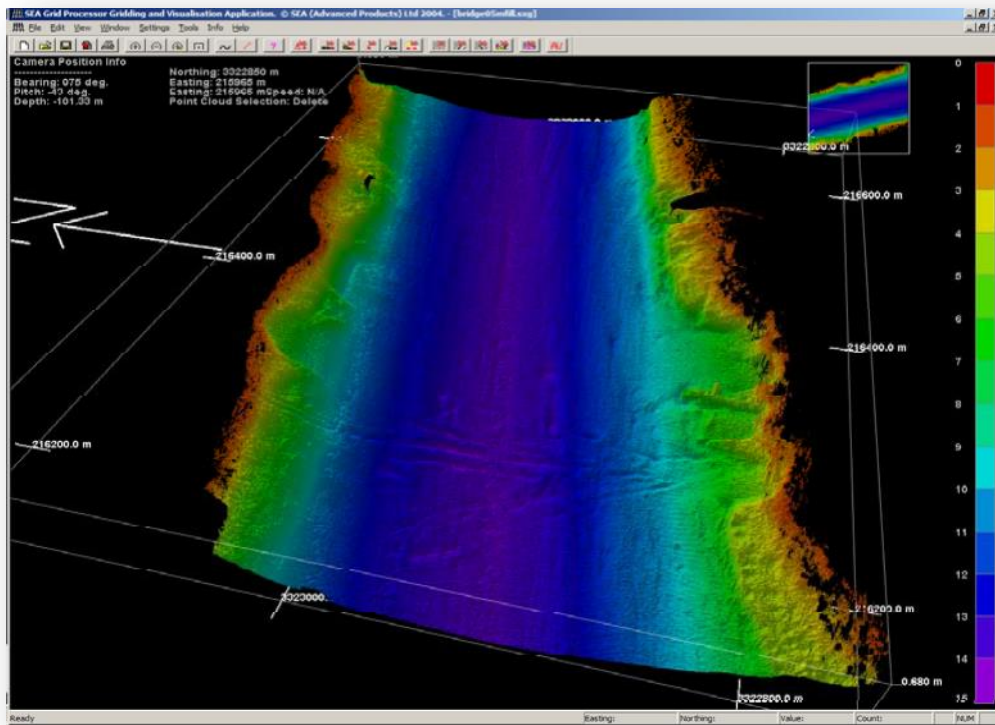


1 SYSTEM USED

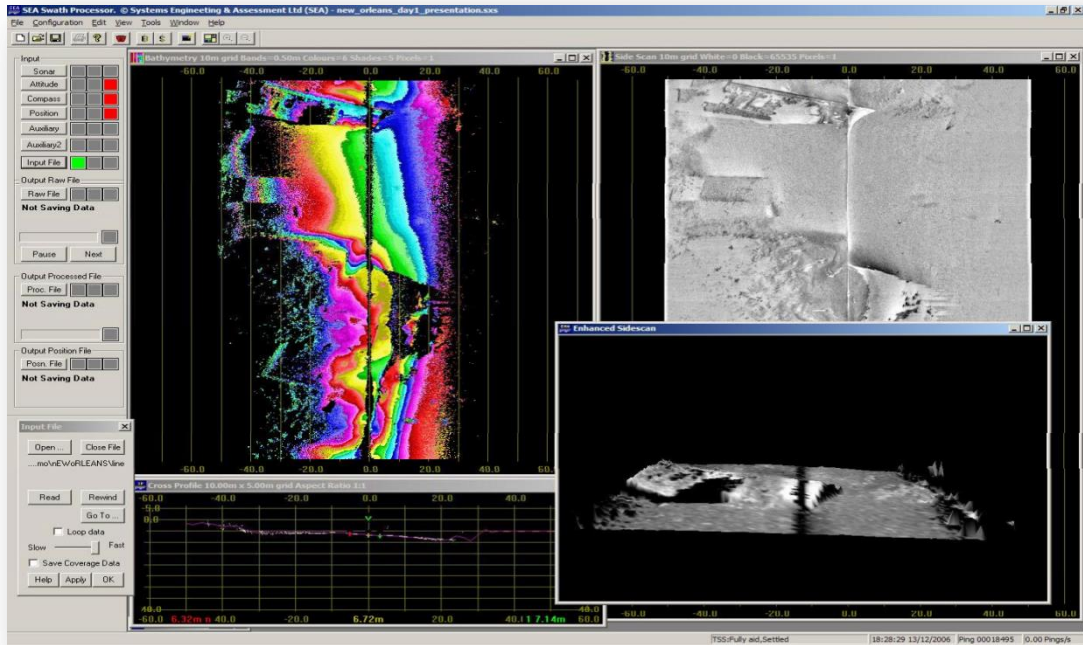
Sonar: Bathyswath-1 (SWATHplus) - 468 kHz
 Motion sensing and positioning: Coda-Octopus F180

2 SURVEY DESCRIPTION

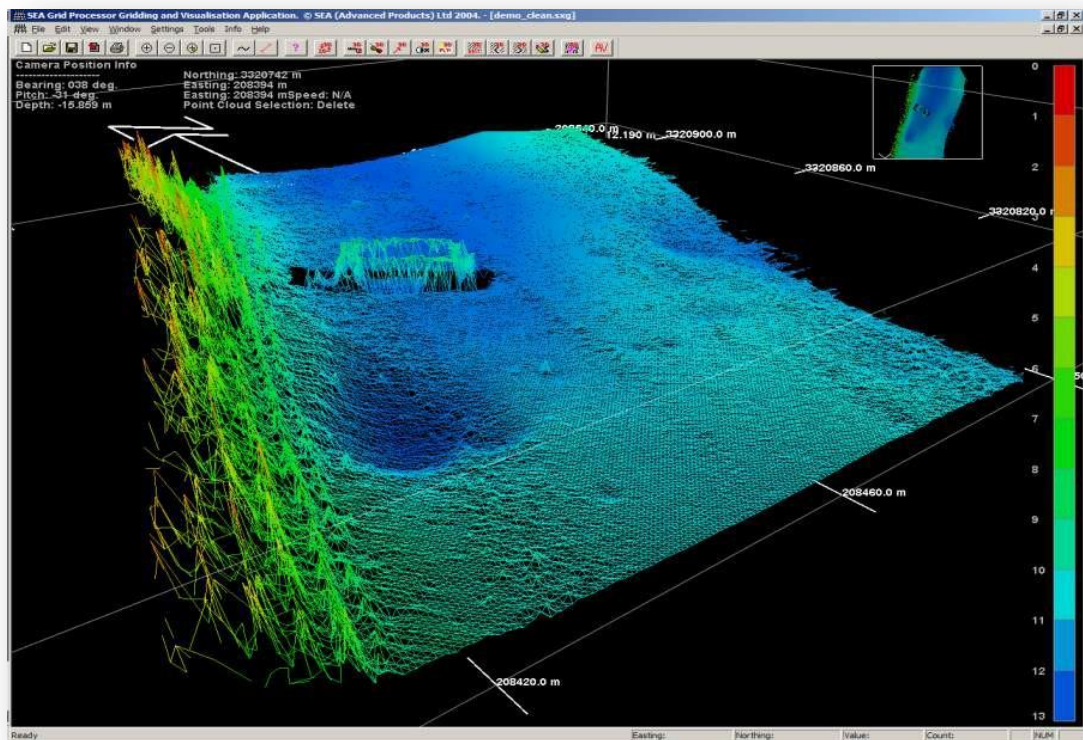
This was a trial for John Chance Land Survey on the Gulf Outlet Canal in New Orleans. The survey consisted of a number of small area surveys along the canal and a survey along both shores of the Mississippi River in New Orleans. The survey areas ranged from 1km to 4km in length, in water depths of 0m to 45m. The surveys were undertaken in a day, with a day of preparation and boat mobilization in Lafayette.



3D bathymetry of Gulf Outlet Canal bridge survey site



Real-time views of barge wreck on Gulf Outlet Canal



3D bathymetry view of barge wreck close to a quay

The information contained on this sheet is subject to restrictions listed on the cover page of the document