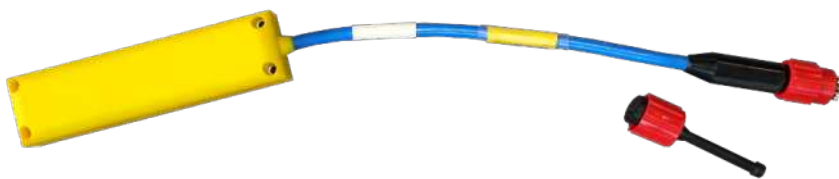
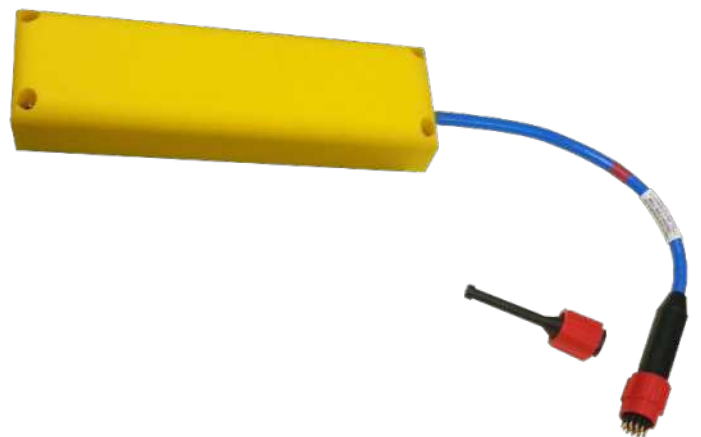
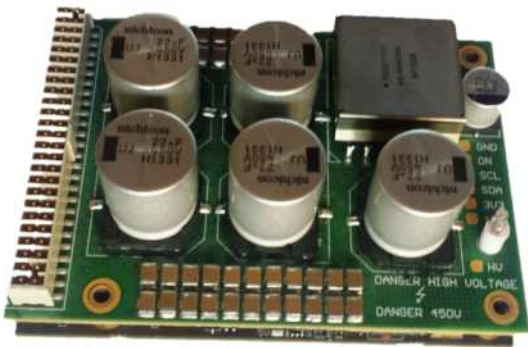
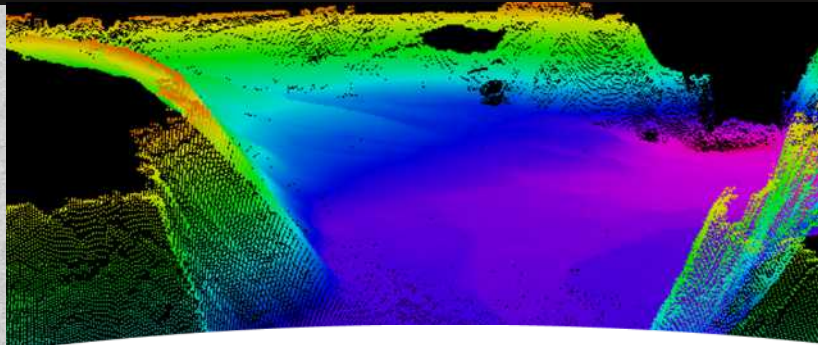
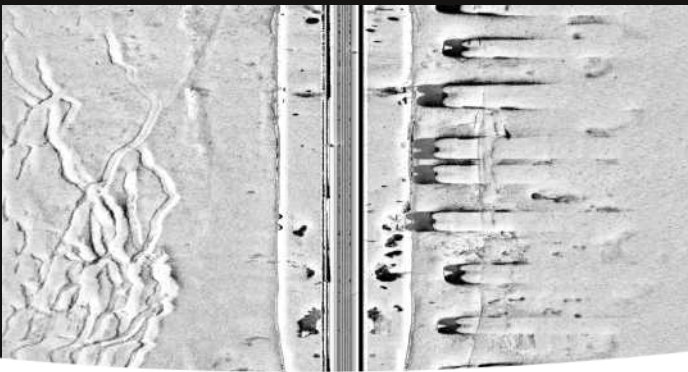
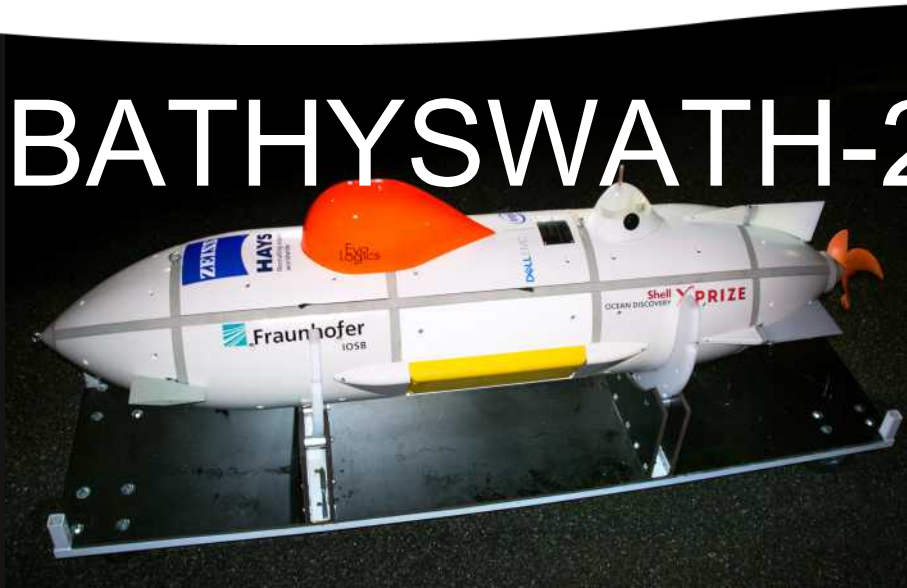




Small, low-power, low-cost swath bathymetry for client installation in small and autonomous vehicles

BATHYSWATH-2-OEM



High density bathymetry & sidescan seafloor imagery data across a very wide swath width

Bathyswath 2 is the latest generation of our bathymetric systems. It has a small but powerful electronics platform and transducers, giving excellent performance in a low power package, with an Ethernet interface. It can be used at any frequency from 100 to 500 kHz. Bathyswath-2-OEM provides system integrators with a package of parts for integration into small vessels and vehicles.

FEATURES

- Swath bathymetry (depth measurement) and sidescan (imaging) in one package
- Suitable for autonomous or human operation
- Ethernet interface
- Full suite of data acquisition and processing software

ADVANTAGES

The main advantages of Bathyswath-2-OEM over other swath bathymetry sonar systems for small autonomous vehicles are:

- Very small electronics package
- Small and light sonar transducers
- Wide swaths when close to the bottom (shallow water or low flying height)
- Simple Ethernet interfacing
- Data acquisition software for Linux or Windows, full survey control and data processing software for Windows
- Low cost

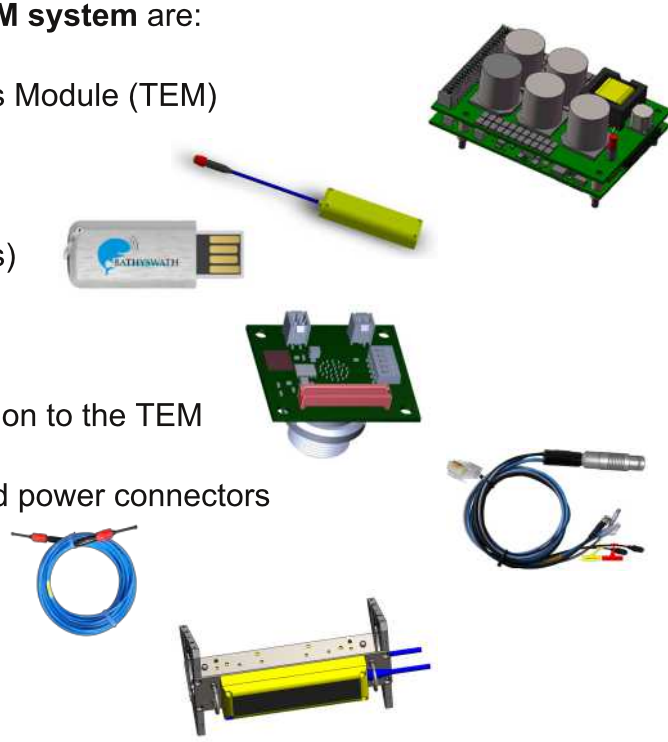
COMPONENTS

The main parts of a Bathyswath-2-OEM system are:

- A Bathyswath-2 Transducer Electronics Module (TEM)
- One, two or three sonar transducers
- Bathyswath software (Linux & Windows)

Optional components include:

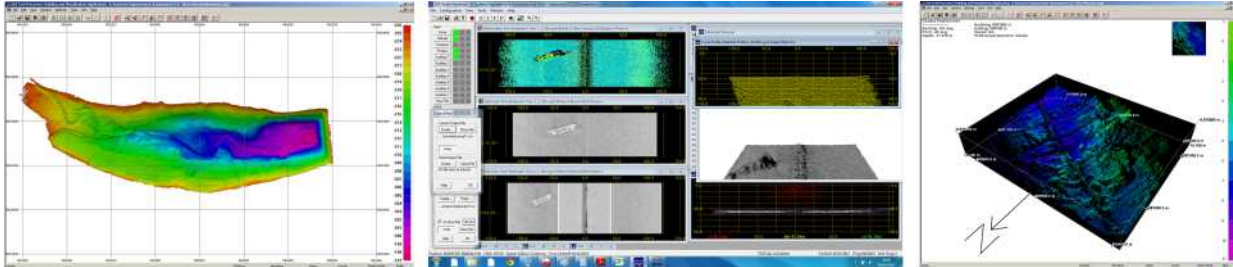
- An interface board, simplifying connection to the TEM
- Cable sets, with standard computer and power connectors
- Transducer extension cables
- Transducer mounting hardware



You will not find better price for the same quality

SOFTWARE

Bathyswath data acquisition & processing software is included in system price, and you can also interface to 3rd party software systems such as QINSy, Hypack, SonarWiz, CARIS, EIVA, Starfix & PDS2000.



The main Bathyswath software suite runs on Windows, and has a rich set of interfaces for operation on remote vehicles.

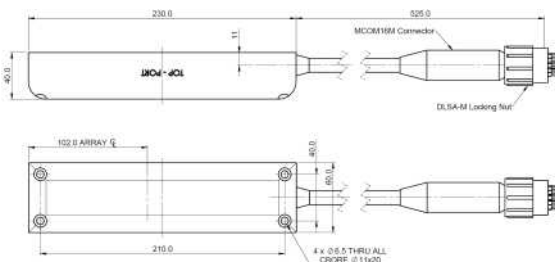
For operation on small, low-powered vehicles, we provide a Linux application, which provides a cut-down set of functions for real-time operation. Software additions and modifications are available on request.

INTERFACING

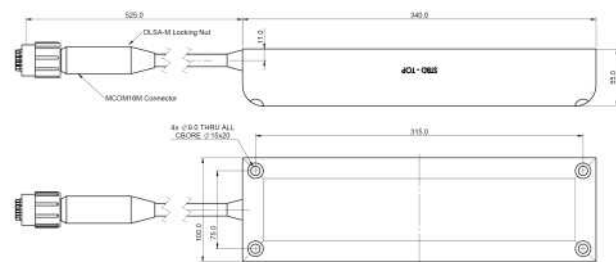
It is simple to interface Bathyswath-2-OEM to your system hardware and software:

- Mechanical CAD models and installation advice available on request
- Off-the-shelf and custom-built mechanical mounting hardware available
- Full documentation of electrical and logical interfaces provided
- Works with most major INS, GNSS and sound velocity sensor hardware
- Interfaces with most major bathymetric survey software package, or the Bathyswath software can be used stand-alone

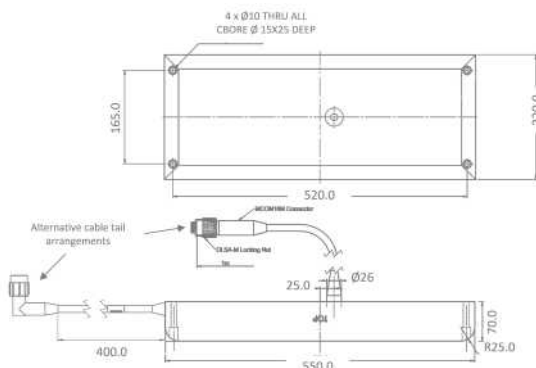
468kHz transducer



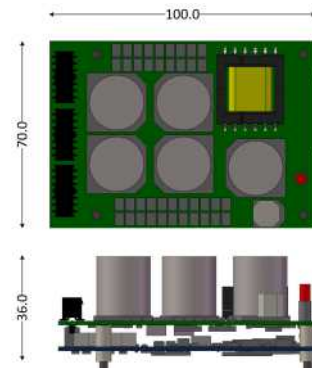
234kHz transducer



117kHz transducer



Transducer Electronics Module



TECHNICAL SPECIFICATIONS

	117 kHz	234 kHz	468 kHz
Operational slant range (m)	400	200	100
Maximum slant range (m)	600	300	150
Minimum depth (m)	0.3	0.2	0.1
Beam width, azimuth (2-way)	0.85°	0.55°	0.55°
Transducer dimensions (mm)	220 x 550 x 70	100 x 340 x 55	60 x 230 x 40
Transducer weight in air / water (kg)	9 / 1.4	5 / 0.8	1 / 0.1
Max. transducer cable length (m)	50	50	50
Transducer electronics module	100 x 70 x 36 mm, 190g		
Power requirement	20W @ 12V		
Communications	100BASE-T Ethernet		
Other interfaces	PPS timing in, transmit sync in & out		
Transducer pressure rating	2000m standard, 4000m & 6000m on request		

For more technical information on interferometric technology and Bathyswath systems, download our technical information document from: bathyswath.com/publications, "Bathyswath Technical Information" and "Bathyswath OEM Integration Manual"

ITER Systems & Bathyswath

ITER Systems is the world's most experienced team of developers of interferometric sonars. Its products are direct descendants of the world's first commercially available interferometric swath sonar system, developed into SWATHplus, which renamed Bathyswath in 2013.

Images on front cover: Great Diver AUV with Bathyswath-2-OEM-117 courtesy of Arggonauts Shell XPrize team; EchoBoat-ASV™ courtesy of Seafloor Systems Inc.



ITER Systems

310 impasse de la Tuilerie,
74410 Saint Jorioz, France
Tel.: +33 972 457 330
sales@iter-systems.com
support@iter-systems.com

www.bathyswath.com
www.iter-systems.com
Registration number:
799 207 972 RCS Annecy

**YOUR LOCAL BATHYSWATH
REPRESENTATIVE:**